

# Disaster Mitigation Economic Assets - Employment

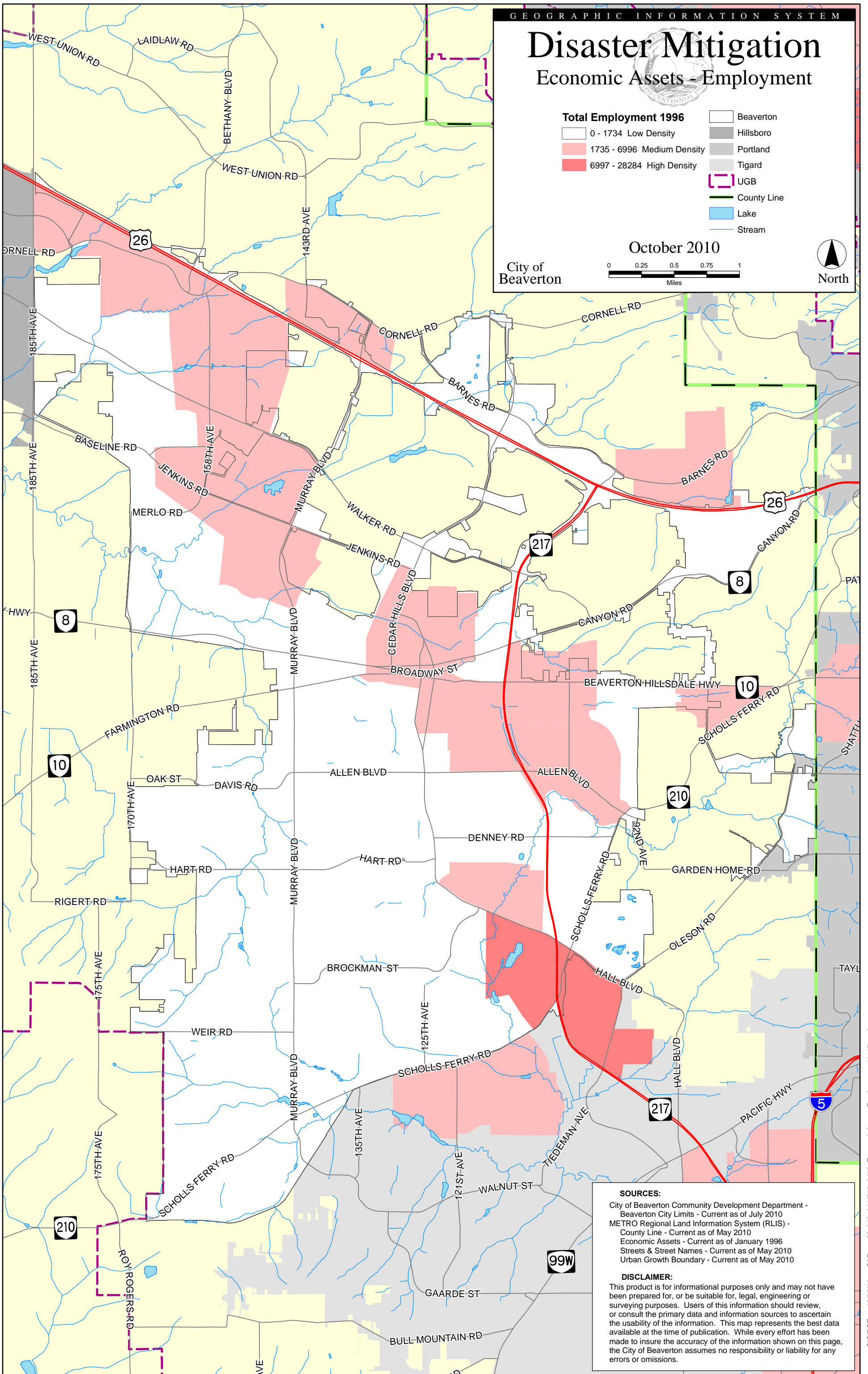
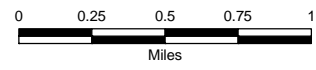
### Total Employment 1996

- 0 - 1734 Low Density
- 1735 - 6996 Medium Density
- 6997 - 28284 High Density

- Beaverton
- Hillsboro
- Portland
- Tigard
- UGB
- County Line
- Lake
- Stream

October 2010

City of Beaverton



#### SOURCES:

City of Beaverton Community Development Department - Beaverton City Limits - Current as of July 2010  
 METRO Regional Land Information System (RLIS) - County Line - Current as of May 2010  
 Economic Assets - Current as of January 1996  
 Streets & Street Names - Current as of May 2010  
 Urban Growth Boundary - Current as of May 2010

#### DISCLAIMER:

This product is for informational purposes only and may not have been prepared for, or be suitable for, legal, engineering or surveying purposes. Users of this information should review, or consult the primary data and information sources to ascertain the usability of the information. This map represents the best data available at the time of publication. While every effort has been made to insure the accuracy of the information shown on this page, the City of Beaverton assumes no responsibility or liability for any errors or omissions.