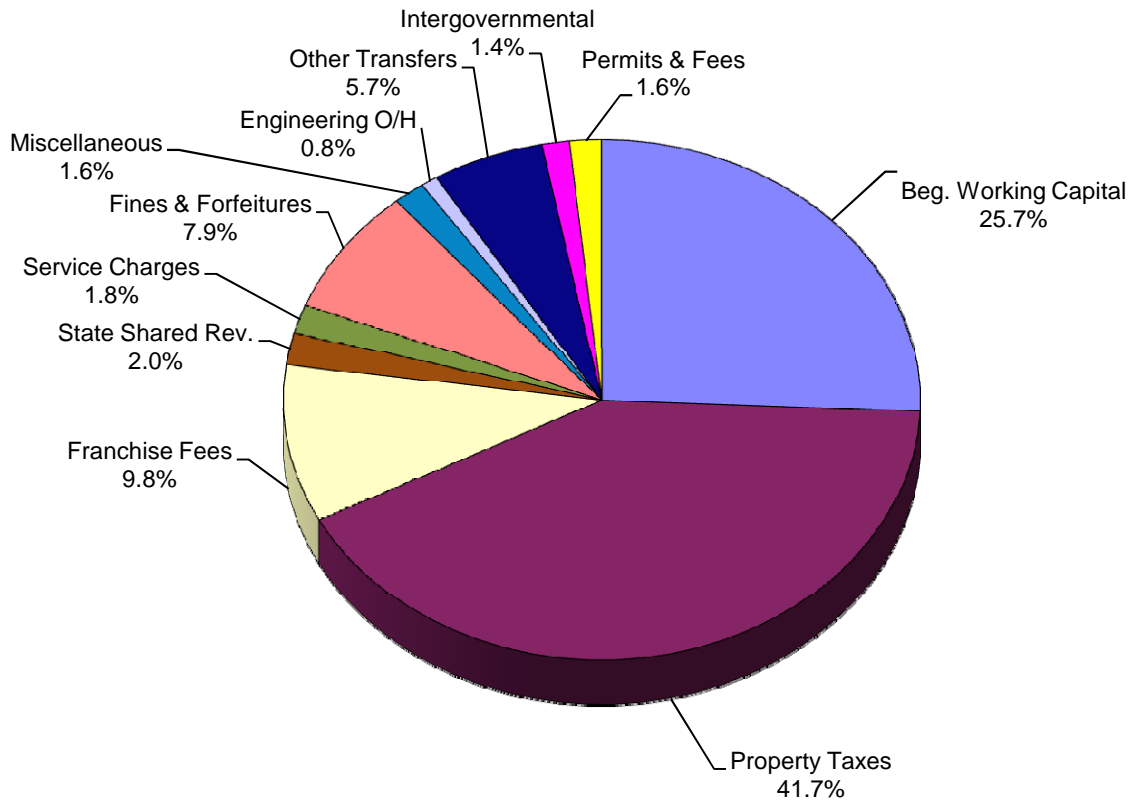
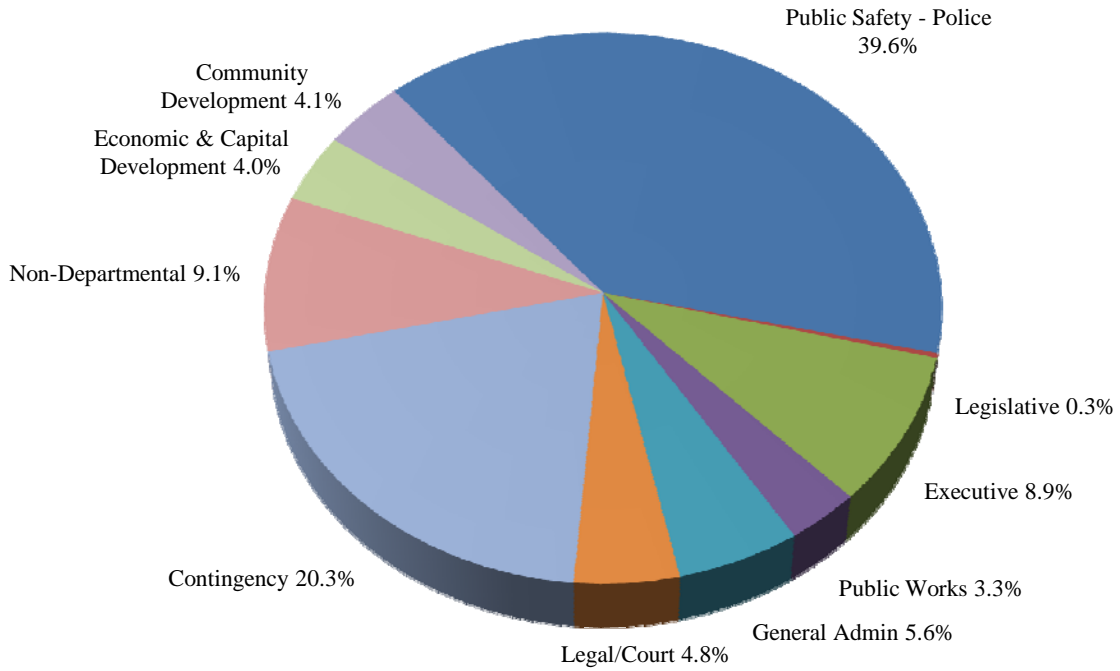


**CITY OF BEAVERTON, OREGON**  
**ADOPTED GENERAL FUND REVENUES FY 2011-12**  
**BY MAJOR CATEGORY**

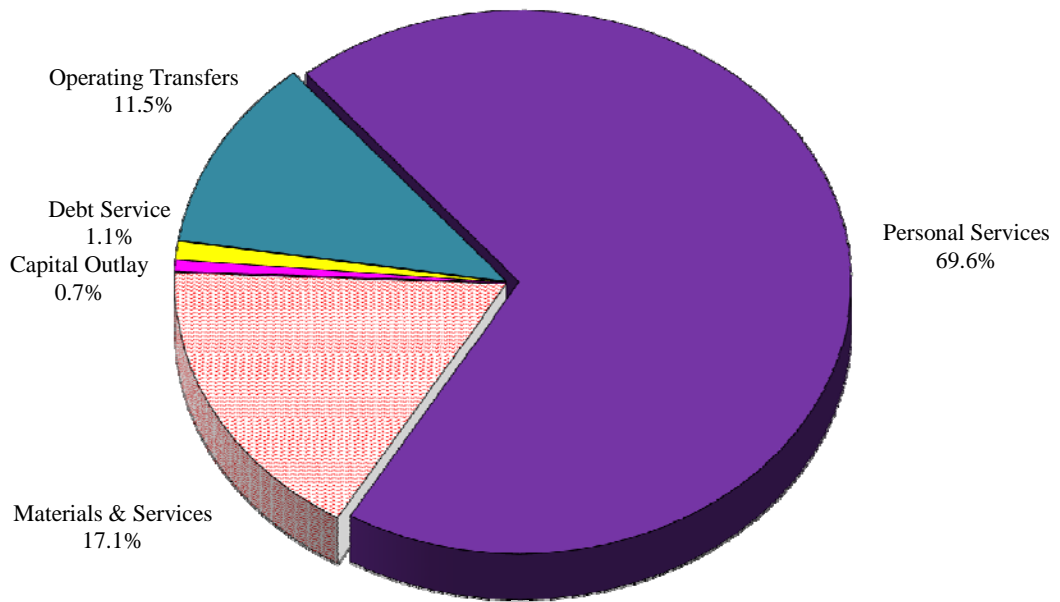


**CITY OF BEAVERTON, OREGON**  
ADOPTED GENERAL FUND BUDGET FY 2011-12



General Admin. = General Services, Finance, and Human Resources. Non-departmental are expenditures in a cost center.

**BY EXPENDITURE TYPE**



CITY OF BEAVERTON, OREGON  
FISCAL YEAR 2011-12 BUDGET

**GENERAL FUND (MAJOR FUND)  
SUMMARY OF REVENUES AND EXPENDITURES  
AND OTHER FINANCING SOURCES & USES**

	<u>FY 2008-09</u> Actual	<u>FY 2009-10</u> Actual	<u>FY 2010-11</u> Budgeted	<u>FY 2010-11</u> Estimated	<u>FY 2011-12</u> Adopted
<b>Revenues:</b>					
Taxes	\$24,305,463	\$25,394,631	\$26,328,605	\$26,428,605	\$27,008,615
Intergovernmental	2,044,558	2,252,672	2,975,625	2,884,193	2,181,730
Business licenses & permits	594,867	541,123	551,400	556,200	541,200
Building permits & fees	471,474	218,379	300,000	300,000	300,000
Zoning & annexation fees	195,296	182,029	200,000	200,000	200,000
Franchise fees	5,646,614	6,308,591	5,868,824	5,727,214	6,345,455
Fine & forfeitures	3,876,287	4,418,281	4,524,254	4,702,878	5,114,592
Interest on investments	463,483	276,440	135,000	116,000	94,400
Charges for services	848,937	1,115,123	1,104,230	1,140,337	1,168,802
Project engineering charges	416,505	574,487	470,000	550,000	550,000
Miscellaneous	1,207,831	894,160	1,015,506	1,097,205	950,892
Sub Total Revenues	<u>\$40,071,315</u>	<u>\$42,175,916</u>	<u>\$43,473,444</u>	<u>\$43,702,632</u>	<u>\$44,455,686</u>
<b>Expenditures:</b>					
Personal services	\$30,207,550	\$31,605,130	\$34,094,334	\$33,283,531	\$35,936,286
Materials & services	6,270,991	6,718,720	9,774,530	8,459,574	8,854,609
Capital outlay	411,818	415,056	1,633,498	1,584,891	343,400
Sub Total Expenditures	<u>\$36,890,359</u>	<u>\$38,738,906</u>	<u>\$45,502,362</u>	<u>\$43,327,996</u>	<u>\$45,134,295</u>
Revenues Over/Under Expenditures	\$3,180,956	\$3,437,010	(\$2,028,918)	\$374,636	(\$678,609)
<b>Other financing sources (uses):</b>					
Transfers in	\$2,947,525	\$3,278,093	\$3,706,097	\$3,706,097	\$3,675,233
Transfers out	(4,336,341)	(5,288,995)	(5,583,662)	(5,319,790)	(5,923,311)
Debt Service - Principal	(344,538)	(360,033)	(370,837)	(370,837)	(381,962)
Debt Service - Interest	(180,252)	(180,252)	(180,252)	(180,252)	(180,252)
Debt Service Fees	0	0	0	0	0
Total Other Financing Sources (Uses):	<u>(1,913,606)</u>	<u>(2,551,187)</u>	<u>(2,428,654)</u>	<u>(2,164,782)</u>	<u>(2,810,292)</u>
Net Change in Fund Balance	\$1,267,350	\$885,823	(\$4,457,572)	(\$1,790,146)	(\$3,488,901)
<b>Fund Balance/Working Capital</b>					
Beginning of Year	<u>16,267,746</u>	<u>17,535,096</u>	<u>18,420,919</u>	<u>18,420,919</u>	<u>16,630,773</u>
<b>Fund Balance (Contingency)/Working Capital</b>					
End of Year	<u>\$17,535,096</u>	<u>\$18,420,919</u>	<u>\$13,963,347</u>	<u>\$16,630,773</u>	<u>\$13,141,872</u>

Contingency for FY 2011-12 adopted budget is available for appropriation upon the City Council's approval. The contingency policy is to maintain a level equal to at least 16% of the General Fund expenditures. The adopted FY 2011-12 contingency of \$13,141,872 is equal to 25.5% of expenditures (using total expenditures, transfers out and debt service) and includes \$618,100 dedicated for vehicle replacement, which leaves \$12,523,772 as undesignated contingency.

CITY OF BEAVERTON, OREGON  
FISCAL YEAR 2011-12 BUDGET

**GENERAL FUND  
SCHEDULE OF REVENUES AND TRANSFERS**

	FY 2008-09 Actual	FY 2009-10 Actual	FY 2010-11 Budgeted	FY 2010-11 Estimated	FY 2011-12 Adopted
<b>Revenues:</b>					
Property Taxes:					
Current year's levy	\$23,901,179	\$24,835,415	\$25,978,605	\$25,978,605	\$26,658,615
Prior years' levy	404,283	559,216	350,000	450,000	350,000
Interest on unsegregated taxes	27,701	11,165	35,000	11,000	11,000
Franchise fees to other funds	(996,461)	(964,700)	(981,851)	(981,851)	(975,990)
Payments in lieu of taxes/utility	1,475,174	1,542,989	1,625,600	1,625,600	1,690,445
Franchise fees					
PGE Company	2,514,126	2,680,923	2,650,000	2,553,465	2,650,000
Northwest Natural	921,972	762,718	900,000	760,000	760,000
Frontier/Verizon	155,416	536,340	100,000	95,000	80,000
Qwest	16,857	66,169	15,600	14,000	10,000
Refuse Collection	635,568	665,046	640,000	675,000	675,000
Cable TV	729,939	866,088	766,000	810,000	830,000
AT&T	194,023	153,019	153,475	176,000	176,000
Other intergovernmental revenues	116,838	106,741	146,162	175,101	125,000
Federal Grants	300,151	611,550	1,165,367	1,006,452	354,090
State of Oregon grants	27,430	32,641	29,096	27,640	27,640
Business licenses	516,212	471,387	480,000	485,000	470,000
Fines & bails forfeited	2,795,172	3,000,765	2,863,261	3,000,000	3,003,000
911 Excise Tax	0	0	0	0	450,000
Liquor tax	1,036,854	977,101	1,150,000	1,150,000	1,150,000
Cigarette tax	135,223	126,564	125,000	125,000	125,000
County room tax	428,063	398,075	360,000	400,000	400,000
Planning Dev. Rev. & Annex Fees	195,296	182,029	200,000	200,000	200,000
Site Development Permit Fees	471,474	218,379	300,000	300,000	300,000
Interest on investments	463,483	276,440	135,000	116,000	94,400
Charges for services	848,937	1,115,123	1,104,230	1,140,337	1,168,802
City liquor licenses	9,145	9,337	9,200	9,200	9,200
Good Neighbor Days receipts	13,475	11,800	13,500	13,950	13,000
Parking permits	2,760	2,405	2,200	2,000	2,000
Parking fines	45,101	44,371	46,000	42,000	42,000
Photo radar court fines	606,602	925,715	765,000	900,000	826,500
Photo red light court fines	400,475	418,492	821,993	731,434	1,213,648
Alarm system permits	66,750	57,994	60,000	60,000	60,000
Project engineering charges	416,505	574,487	470,000	550,000	550,000
Miscellaneous	1,195,592	900,132	995,006	1,101,699	956,336
<b>Total Revenues</b>	<b>\$40,071,315</b>	<b>\$42,175,916</b>	<b>\$43,473,444</b>	<b>\$43,702,632</b>	<b>\$44,455,686</b>

CITY OF BEAVERTON, OREGON  
FISCAL YEAR 2011-12 BUDGET

**GENERAL FUND**  
**SCHEDULE OF REVENUES AND TRANSFERS**  
(Continued)

	<u>FY 2008-09</u> <u>Actual</u>	<u>FY 2009-10</u> <u>Actual</u>	<u>FY 2010-11</u> <u>Budgeted</u>	<u>FY 2010-11</u> <u>Estimated</u>	<u>FY 2011-12</u> <u>Adopted</u>
<b>Transfers from Other Funds:</b>					
Street	\$989,801	\$1,019,322	\$1,192,758	\$1,192,758	\$1,293,166
State Revenue Sharing	154,451	148,525	189,000	189,000	193,500
Building Operating	214,512	338,290	336,562	336,562	239,218
Library	710,270	747,835	832,944	832,944	866,620
Traffic Impact Fee	19,149	18,902	19,136	19,136	18,660
Assessment #1	8,000	8,000	8,000	8,000	0
Assessment Projects	0	0	0	0	33,908
Water:					
Accounting & overhead	348,813	340,839	336,349	336,349	352,219
Sewer:					
Accounting & overhead	203,461	268,542	262,739	262,739	262,221
Storm Drain:					
Accounting & overhead	209,874	293,871	298,327	298,327	295,661
Garage	6,990	5,840	3,807	3,807	3,584
Insurance	49,022	48,823	68,626	68,626	67,513
Street Lighting	27,432	33,163	145,374	145,374	34,886
Community Dev. Block Grant	5,750	6,141	12,475	12,475	14,077
<b>Total Transfers</b>	<u>2,947,525</u>	<u>3,278,093</u>	<u>3,706,097</u>	<u>3,706,097</u>	<u>3,675,233</u>
<b>Total Revenues &amp; Transfers</b>	43,018,840	45,454,009	47,179,541	47,408,729	48,130,919
<b>Beginning Working Capital</b>	<u>16,267,746</u>	<u>17,535,096</u>	<u>18,420,919</u>	<u>18,420,919</u>	<u>16,630,773</u>
	<u>\$59,286,586</u>	<u>\$62,989,105</u>	<u>\$65,600,460</u>	<u>\$65,829,648</u>	<u>\$64,761,692</u>

CITY OF BEAVERTON, OREGON  
FISCAL YEAR 2011-12 BUDGET

**GENERAL FUND  
SCHEDULE OF EXPENDITURES AND TRANSFERS**

	<b>FY 2008-09 Actual</b>	<b>FY 2009-10 Actual</b>	<b>FY 2010-11 Budgeted</b>	<b>FY 2010-11 Estimated</b>	<b>FY 2011-12 Adopted</b>
<b>City Council:</b>					
Personal Services	\$79,552	\$78,169	\$80,596	\$79,554	\$78,540
Materials & Services	57,337	73,731	95,010	46,456	83,935
	<u>136,889</u>	<u>151,900</u>	<u>175,606</u>	<u>126,010</u>	<u>162,475</u>
<b>Mayor's Office:</b>					
Personal Services	2,701,419	3,041,480	3,350,200	3,291,699	3,573,187
Materials & Services	885,430	1,241,863	1,458,064	1,109,554	1,680,183
Capital Outlay	21,004	0	60,617	32,010	30,000
Contingency	0	0	28,000	0	31,800
	<u>3,607,854</u>	<u>4,283,343</u>	<u>4,896,881</u>	<u>4,433,263</u>	<u>5,315,170</u>
<b>General Services:</b>					
Personal Services	543,486	586,392	591,640	580,701	581,499
Materials & Services	81,320	166,015	210,911	119,861	134,635
Capital Outlay	0	0	0	0	0
	<u>624,806</u>	<u>752,406</u>	<u>802,551</u>	<u>700,562</u>	<u>716,134</u>
<b>Non-Departmental:</b>					
Personal Services	37,056	34,438	0	0	0
Materials & Services	1,415,725	1,402,037	2,300,787	2,100,399	1,510,577
Capital Outlay	92,688	67,252	1,200,036	1,180,036	35,000
Debt Service	524,790	540,285	551,089	551,089	562,214
Contingency (Estimated Ending Working Capital)	0	0	13,499,130	0	12,642,772
	<u>2,070,259</u>	<u>2,044,013</u>	<u>17,551,042</u>	<u>3,831,524</u>	<u>14,750,563</u>
<b>Human Resources:</b>					
Personal Services	728,248	713,910	786,681	770,414	807,267
Materials & Services	211,593	167,305	183,281	157,051	203,987
	<u>939,841</u>	<u>881,214</u>	<u>969,962</u>	<u>927,465</u>	<u>1,011,254</u>
<b>Finance Department:</b>					
Personal Services	1,323,533	1,352,272	1,478,458	1,415,993	1,687,398
Materials & Services	97,583	80,389	93,425	82,077	92,742
	<u>1,421,116</u>	<u>1,432,661</u>	<u>1,571,883</u>	<u>1,498,070</u>	<u>1,780,140</u>
<b>Municipal Court:</b>					
Personal Services	977,528	1,089,292	1,232,882	1,191,212	1,347,082
Materials & Services	542,626	500,729	598,549	499,706	573,259
	<u>1,520,154</u>	<u>1,590,021</u>	<u>1,831,431</u>	<u>1,690,918</u>	<u>1,920,341</u>

CITY OF BEAVERTON, OREGON  
FISCAL YEAR 2011-12 BUDGET

**GENERAL FUND**  
**SCHEDULE OF EXPENDITURES AND TRANSFERS**  
(Continued)

	FY 2008-09 Actual	FY 2009-10 Actual	FY 2010-11 Budgeted	FY 2010-11 Estimated	FY 2011-12 Adopted
<b>City Attorney:</b>					
Personal Services	\$954,711	\$969,529	\$1,043,783	\$1,026,666	\$1,075,912
Materials & Services	22,333	25,370	74,341	44,347	49,227
	<u>977,044</u>	<u>994,898</u>	<u>1,118,124</u>	<u>1,071,013</u>	<u>1,125,139</u>
<b>Police:</b>					
Personal Services	18,087,354	18,712,710	20,078,247	19,641,157	21,130,481
Materials & Services	2,219,649	2,345,382	2,784,367	2,634,511	3,218,950
Capital Outlay	194,614	322,114	372,845	372,845	206,400
Contingency	0	0	186,217	0	224,620
	<u>20,501,616</u>	<u>21,380,205</u>	<u>23,421,676</u>	<u>22,648,513</u>	<u>24,780,451</u>
<b>Community Development Department:</b>					
Personal Services	1,738,947	1,897,740	2,082,419	2,052,671	2,138,449
Materials & Services	183,888	237,225	977,180	856,372	439,460
Capital Outlay	0	0	0	0	0
Contingency	0	0	0	0	0
	<u>1,922,835</u>	<u>2,134,964</u>	<u>3,059,599</u>	<u>2,909,043</u>	<u>2,577,909</u>
<b>Economic &amp; Capital Development</b>					
Personal Services	0	0	1,790,649	1,714,936	1,925,077
Materials & Services	0	0	693,100	542,749	587,379
Capital Outlay	0	0	0	0	23,000
Contingency	0	0	30,000	0	33,700
	<u>0</u>	<u>0</u>	<u>2,513,749</u>	<u>2,257,685</u>	<u>2,569,156</u>
<b>Public Works Dept. - Engineering Division:</b>					
Personal Services	1,843,497	1,919,183	0	10,296	0
Materials & Services	97,993	41,721	0	0	0
Capital Outlay	17,234	25,690	0	0	0
Contingency	0	0	0	0	0
	<u>1,958,723</u>	<u>1,986,593</u>	<u>0</u>	<u>10,296</u>	<u>0</u>
<b>Public Works Dept. - Operations Division:</b>					
Personal Services	1,192,219	1,210,016	1,578,779	1,508,232	1,591,394
Materials & Services	455,514	436,955	305,515	266,491	280,275
Capital Outlay	86,279	0	0	0	49,000
Contingency	0	0	220,000	0	208,980
	<u>1,734,012</u>	<u>1,646,971</u>	<u>2,104,294</u>	<u>1,774,723</u>	<u>2,129,649</u>
<b>Total Expenditures</b>	<u>\$37,415,149</u>	<u>\$39,279,190</u>	<u>\$60,016,798</u>	<u>\$43,879,085</u>	<u>\$58,838,381</u>

CITY OF BEAVERTON, OREGON  
FISCAL YEAR 2011-12 BUDGET

**GENERAL FUND**  
**SCHEDULE OF EXPENDITURES AND TRANSFERS**  
(Continued)

	FY 2008-09 Actual	FY 2009-10 Actual	FY 2010-11 Budgeted	FY 2010-11 Estimated	FY 2011-12 Adopted
<b>Transfer to Other Funds:</b>					
Building Operating Fund	\$0	\$161,420	\$161,240	\$161,240	\$157,596
Library Fund	541,935	454,201	338,969	338,969	351,955
Library Fund - Collection	0	0	131,250	131,250	132,026
Library Fund - Branch Library	0	350,000	400,000	400,000	450,000
Working Capital	0	0	0	0	0
Capital Development Fund	0	220,000	300,000	300,000	503,000
Reprographics	776,794	800,031	1,009,001	809,699	865,954
Garage	790,775	861,220	955,849	906,849	912,527
Information Systems - Allocated	1,299,268	1,536,518	1,583,218	1,583,218	1,721,774
Geographical Information Systems	274,550	254,930	239,986	239,986	330,571
Public Works Administration	260,394	297,700	146,524	130,954	127,391
Insurance	392,625	352,975	317,625	317,625	317,625
Beaverton Arts Commission	0	0	0	0	52,892
<b>Total Transfers</b>	<u>4,336,341</u>	<u>5,288,995</u>	<u>5,583,662</u>	<u>5,319,790</u>	<u>5,923,311</u>
<b>Total Expenditures &amp; Transfers</b>	<u><u>\$41,751,489</u></u>	<u><u>\$44,568,185</u></u>	<u><u>\$65,600,460</u></u>	<u><u>\$49,198,875</u></u>	<u><u>\$64,761,692</u></u>

**Summary of General Fund Expenditures by Expenditure Category:**

Personal Services	\$30,207,550	\$31,605,130	\$34,094,334	\$33,283,531	\$35,936,286
Materials & Services	6,270,991	6,718,720	9,774,530	8,459,574	8,854,609
Capital Outlay	411,818	415,056	1,633,498	1,584,891	343,400
Transfers	4,336,341	5,288,995	5,583,662	5,319,790	5,923,311
Debt Service	524,790	540,285	551,089	551,089	562,214
Contingency (Estimated Ending Working Capital)	<u>0</u>	<u>0</u>	<u>13,963,347</u>	<u>0</u>	<u>13,141,872</u>
	<u><u>\$41,751,489</u></u>	<u><u>\$44,568,185</u></u>	<u><u>\$65,600,460</u></u>	<u><u>\$49,198,875</u></u>	<u><u>\$64,761,692</u></u>